

# Athelstan Premium Apartments



## Apartment 17 Available now!

**\$1,500,000 - \$1,540,000**

Discover this premium two bedroom plus study apartment available at Athelstan.

This large apartment features an open plan living and dining area that leads out to a north-facing private terrace.

You'll find ample storage with a walk-in robe in the master bedroom, and built-in robes in the second bedroom.

Only the finest fixtures and finishes are found within, with stone benchtops and stainless-steel appliances in the kitchen.

A second bathroom and laundry room complete this spacious home. You'll also find two underground car spaces with lock-up storage that provides peace of mind.

At Athelstan, you can delve into a new book in the library, connect with friends in one of the luxurious, light-filled lounges or attend one of the special interest groups.

Located in leafy Camberwell, Athelstan represents the very best that Melbourne living can offer.



**Please call Colin for a private inspection.**



(03) 9809 1231

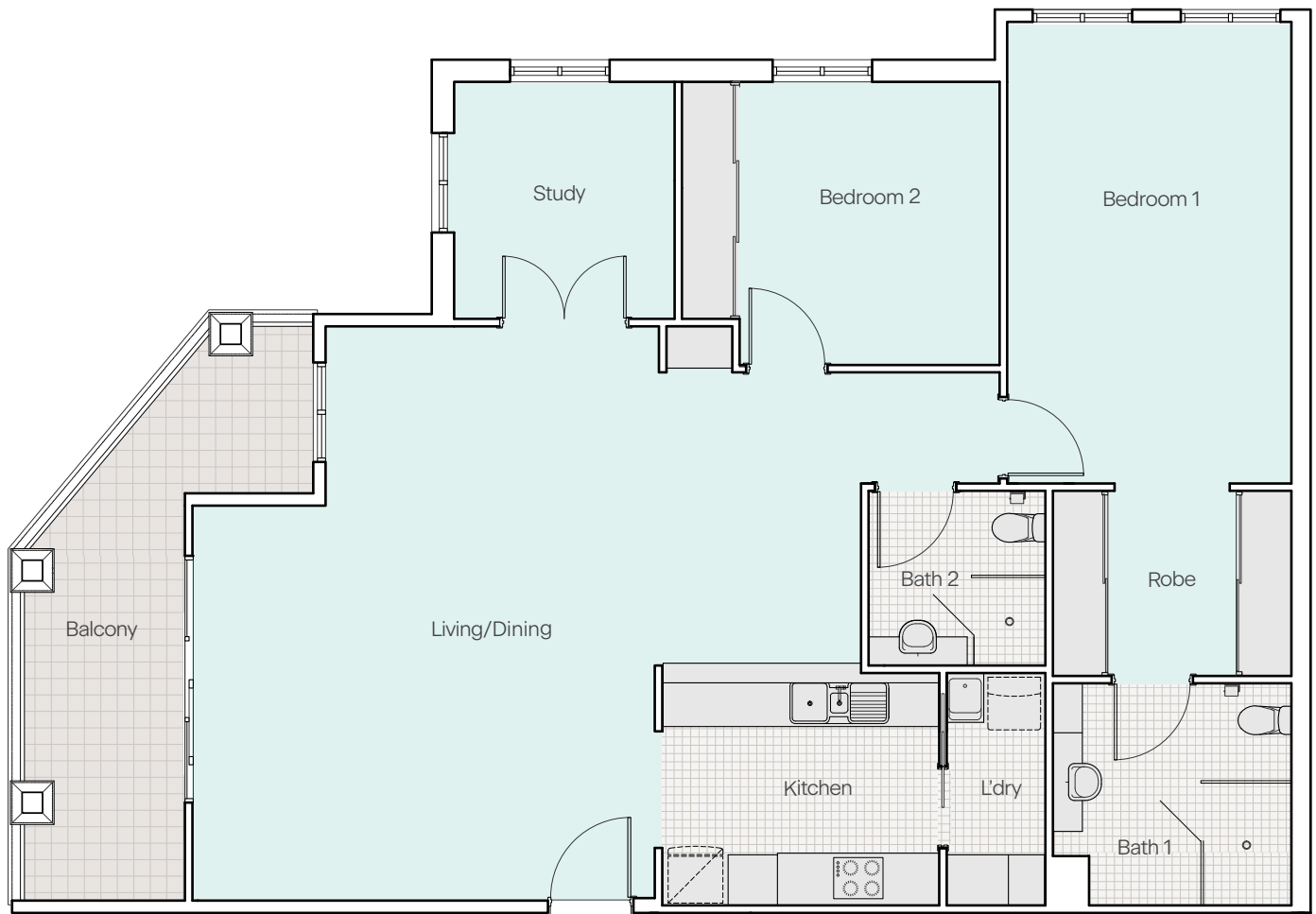
[vmch.com.au/athelstan](http://vmch.com.au/athelstan)

450 Camberwell Road, Camberwell VIC 3124



**VMCH**

# Athelstan | Apartment 17



## Approximate measurements

Internal area 131 sqm		
<b>Bedroom 1</b> 3.4 m x 5.5 m	<b>Bedroom 2</b> 3.4 m x 3.2 m	<b>Living/Dining</b> 6.8 m x 5.6 m
<b>Kitchen</b> 2.9 m x 3.3 m	<b>Study</b> 2.8 m x 2.6 m	<b>Balcony</b> 13 sqm

Disclaimer: The information provided is for illustrative purposes only and may not match the advertised property. Measurements are approximate and indicative only. The floor plan may be mirrored. Furniture is not included. VMCH reserves the right to vary the plans and measurements at any time.



Please call Colin for a private inspection.



(03) 9809 1231

[vmch.com.au/athelstan](https://vmch.com.au/athelstan)

450 Camberwell Road, Camberwell VIC 3124



**VMCH**